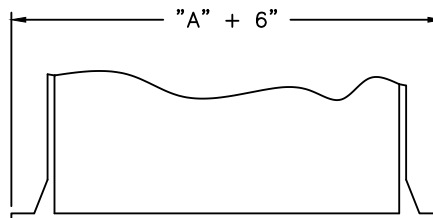
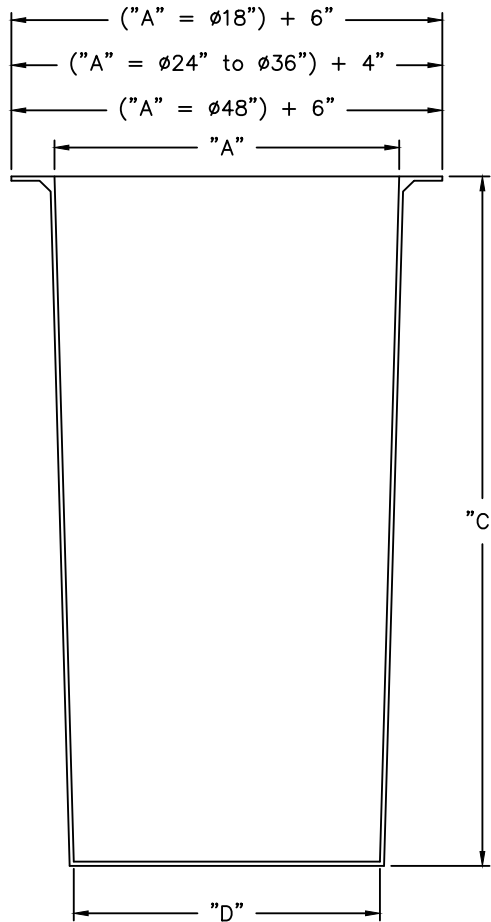
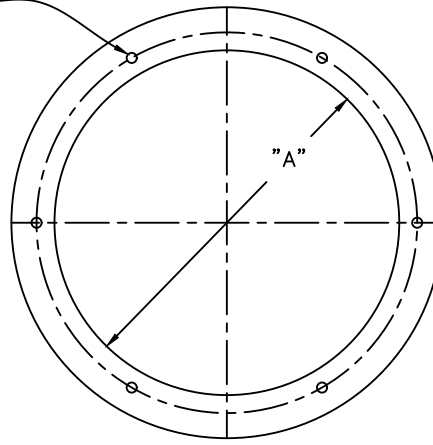


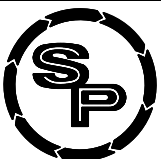
(6) 3/8"-16 TAPPED S.S. INSERTS ON "E" BOLT CIRCLE
 NOTE: 18" DIA. BASIN ONLY HAS 4 TAPPED S.S. INSERTS



BOTTOM ANTI-FLOATATION FLANGE
 (WHEN SPECIFIED)

DIMENSIONAL DATA

"A"	"B"	"C"	"D"	"E"
18"	24"	30"	16.75"	21.5"
18"	24"	36"	16.5"	21.5"
18"	24"	48"	16"	21.5"
24"	28"	36"	22.0"	26.5"
24"	28"	48"	21.3"	26.5"
24"	28"	54"	21.0"	26.5"
24"	28"	60"	20.7"	26.5"
24"	28"	72"	20.0"	26.5"
30"	34"	36"	28.5"	32.5"
30"	34"	48"	28.0"	32.5"
30"	34"	60"	27.5"	32.5"
30"	34"	72"	27.0"	32.5"
36"	40"	36"	34.5"	38.5"
36"	40"	48"	34.0"	38.5"
36"	40"	60"	33.5"	38.5"
36"	40"	72"	33.0"	38.5"
48"	54"	48"	46.0"	51"
48"	54"	60"	45.5"	51"
48"	54"	72"	45.0"	51"



STEELE PLASTICS, INC.
 1280 Sturgis Rd.
 Conway, AR 72034
 (501) 327-5122 Fax (501) 327-0807

TITLE FIBERGLASS TAPERED BASIN

PROJECT

JOB NO.

P.O. NO.

CUSTOMER

DWG. NO.

401T-R3